



Hardware

Jason Howden

Archaus Architects



Over View

- Workstation Configuration.
 - Multi-Core CPUs
 - 32bit vs 64Bit
 - Dual Screens vs Big Screens
 - Recommended Systems
- Laptop Configuration.
 - Ultra-Lite Notebooks vs Mobile Workstations
 - Recommended Systems
- Server Storage.
 - Fibre Attached Storage (FAS) and Network Attached Storage (NAS)
 - Gigabit and 10Gb Ethernet Networks
 - Wide Area File Systems (WAFS)
- Revit on a MAC.
- Tips and Tricks.
 - Setting the 3GB switch on 32Bit OS
 - Getting more out of your Multi-Core CPU

Hardware



Workstation Configuration

- Multi-Core CPUs.
- 32bit vs 64Bit.
- Dual Screens vs Big Screens.
- Recommended Systems.
 - HP,
 - XW4600 mid-range workstation, Quad Core.
 - XW8600 high-end workstation, Dual Quad Core.
 - Apple,
 - Mac Pro high-end workstation, Dual Quad Core.



Hardware

ARCHAUS
ARCHITECTS



Laptop Configuration

- Ultra-Lite Notebooks vs Mobile Workstations.
- Solid State HDD's
- Recommended Systems.
 - HP,
8710W, Duo Core, 8GB RAM, Full Graphics Card.
 - Apple,
Mac Book Pro, Duo Core, 4GB RAM, sexy.



Hardware

ARCHAUS
ARCHITECTS



Server Storage - Fibre Attached Storage (FAS)

- “Future Proof”.
- Scalable, High Performance “Low Cost” Storage.
- Backup and Restore Data online without Tapes.

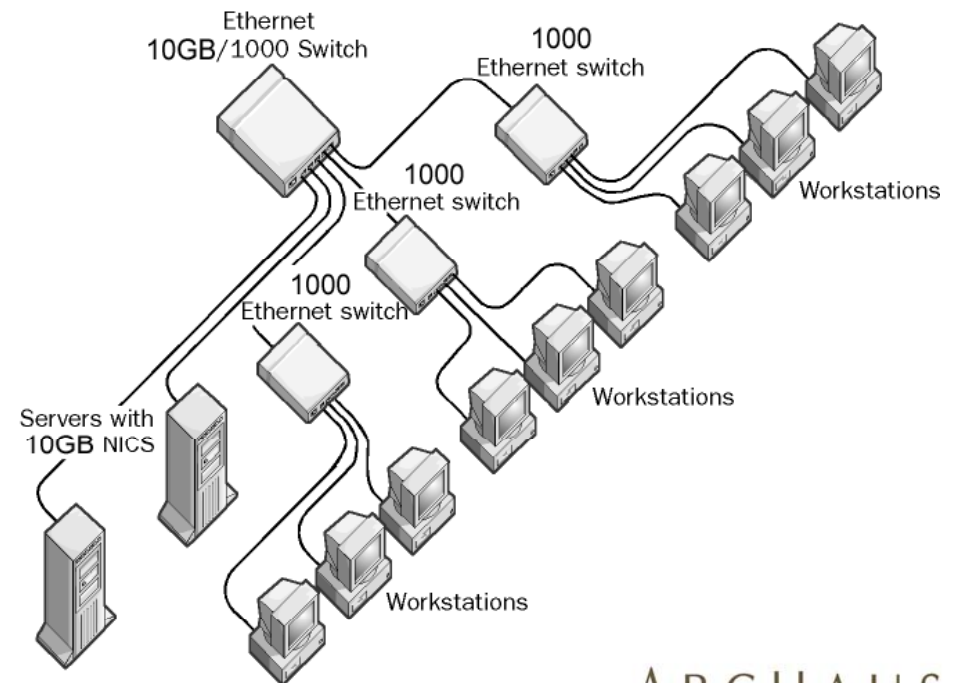


Hardware

ARCHAUS
ARCHITECTS

Server Storage - Gigabit and 10Gb Ethernet

- Cat 6 Cabling, increased bandwidth, full support for Gigabit LANs.
- 10G Server backbones.
- Server consolidation and Data Centers.



Hardware

Server Storage - Wide Area File Systems (WAFS)

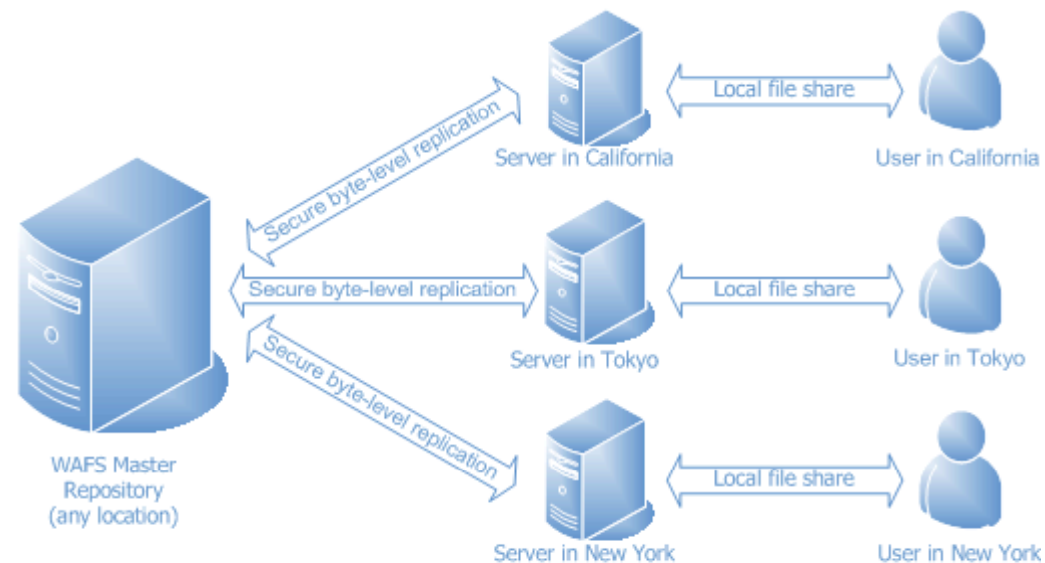
- Enable a remote workforce, collaborate on the same model in real-time.

riverbed Think fast™



Blue Coat

Hardware



- Byte-level differencing is used to replicate data at all locations - only changes are transferred.
- Files are automatically locked at all locations when in use.
- Changes are replicated to all locations in real-time when a user saves.

ARCHAUS
ARCHITECTS



Revit on a Mac

- Bootcamp standard on Mac OSX (Leopard).
- Windows XP and Vista 32Bit Supported at full speed.
- Intel Multi-Core CPU's.
- Mac's just look cool.

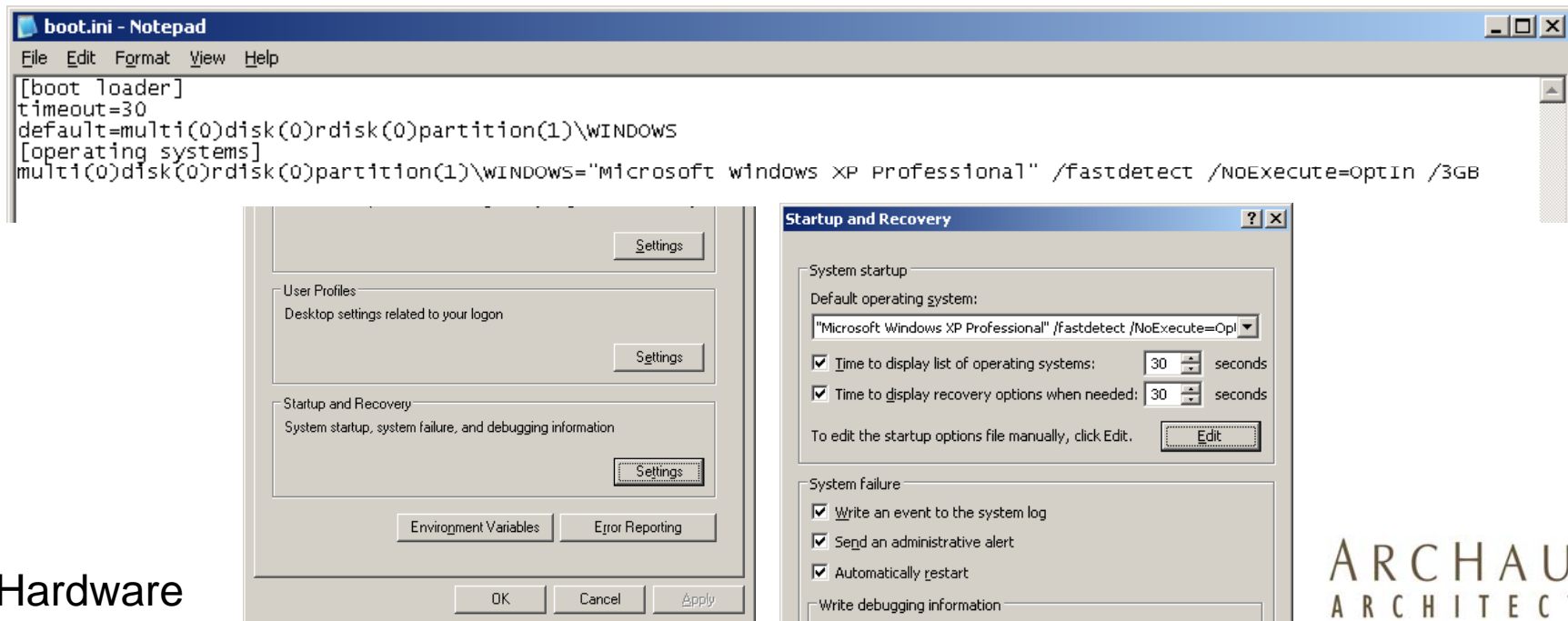


Hardware

ARCHAUS
ARCHITECTS

Tips and Tricks - 3GB switch

- Edit the Windows Boot.ini to enable the 3GB switch.
- Some applications can 'hang' with the 3GB switch enabled i.e. render engines.



The image shows a Notepad window editing the boot.ini file and the Windows XP System Startup and Recovery control panel window. The boot.ini file contains the following text:

```
[boot loader]
timeout=30
default=multi(0)disk(0)rdisk(0)partition(1)\WINDOWS
[operating systems]
multi(0)disk(0)rdisk(0)partition(1)\WINDOWS="Microsoft windows XP Professional" /fastdetect /NoExecute=optIn /3GB
```

The System Startup and Recovery control panel window shows the following settings:

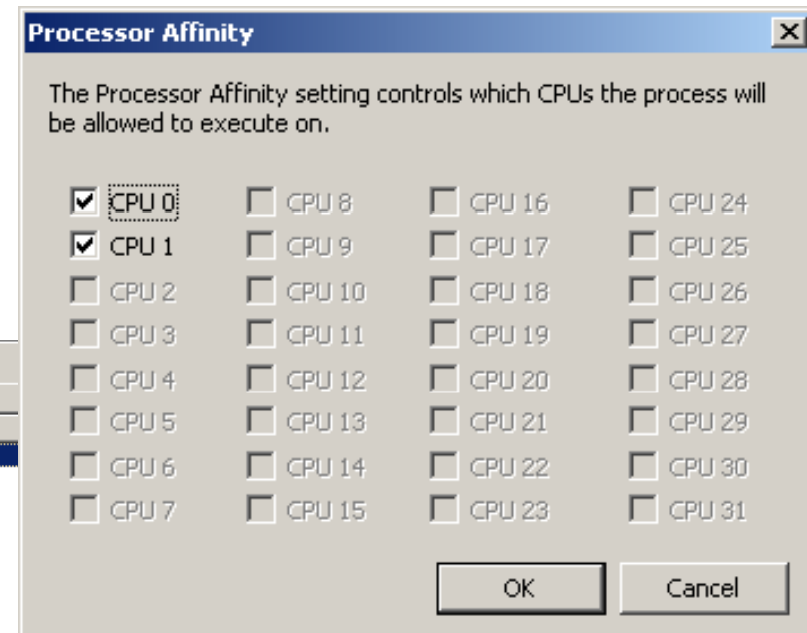
- System startup
- Default operating system: "Microsoft Windows XP Professional" /fastdetect /NoExecute=OptIn
- Time to display list of operating systems: 30 seconds
- Time to display recovery options when needed: 30 seconds
- To edit the startup options file manually, click Edit.
- System failure
- Write an event to the system log
- Send an administrative alert
- Automatically restart
- Write debugging information

Hardware

Tips and Tricks - Multi-Core CPUs

- Why Set the CPU Affinity?
- Setting the CPU Affinity or 'Threads'.
- 3rd Party Applications.

Image Name	User Name	CPU
CLI.exe	Administrator	00
COCIManager.exe	Administrator	00
iPodService.exe	SYSTEM	00
CLI.exe	Administrator	00
KHALMNP.R.EXE	Administrator	00
POWERPNT.EXE	Administrator	00
usnsvc.exe	SYSTEM	00
AcroRd32.exe	Administrator	00
mdmcls32.exe	Administrator	00
LogitechDesktopMessenger.exe	Administrator	00
capfsem.exe	Administrator	00
QOELoader.exe	Administrator	00
firefox.exe	Administrator	00
alg.exe	LOCAL SERVICE	00
cfgmng32.exe	Administrator	00
cctray.exe	Administrator	00
httpd.exe	SYSTEM	00
iTunesHelper.exe	Administrator	00
Communications_Helper.exe	Administrator	00
CAGlobalLight.exe	Administrator	00



Hardware



Thank you
Questions ?

Jason Howden

ARCHAUS
ARCHITECTS