



## What's New – Revit Architecture 2009

*Clay Hickling*

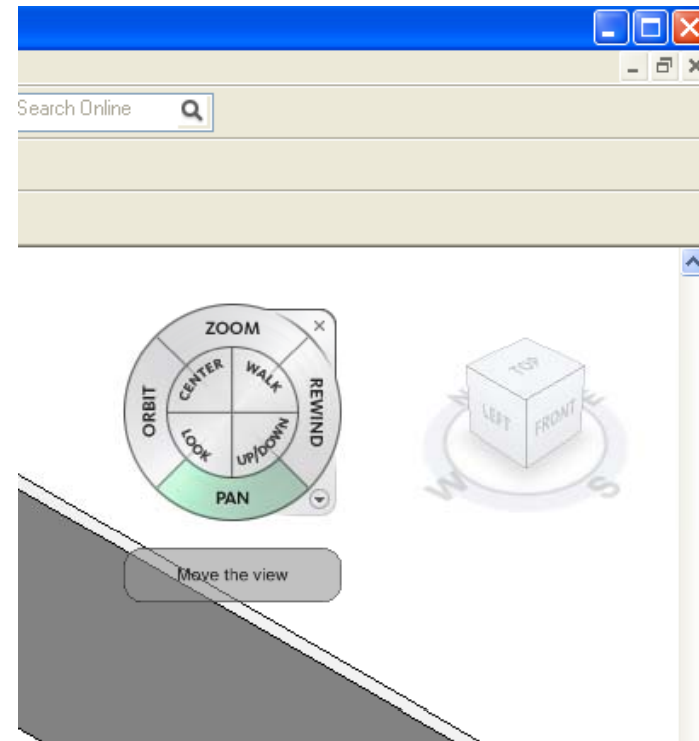
*GHD*





## GUI changes

- Steering Wheel
  - One place for zoom, pan, orbit, walk etc.
- View Cube
- Consistent across Autodesk products

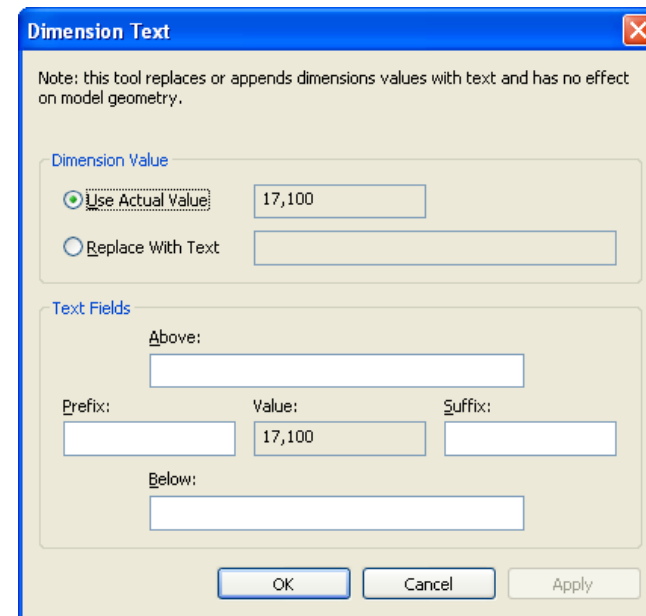


What's New – Revit Architecture 2009



## Dimension Enhancements

- Dimension to Line and Grid Intersections
- Dimension to Arc Centres
- Additional Text formatting (Width factor, Bold, Italic etc)
- Dimension value overrides
  - Current prefix, suffix along with above and below dim line
  - Replace dimension value with user input text





## Revision Enhancements

- Revision Order (Bottom Up or Top Down)
- Numeric and Alpha
- New 'Issued by' Field
- Rotate schedule

Sheet Issues/Revisions

Sequence	Numbering	Date	Description	Issued	Issued to	Issued by	Show
1	Alphabetic	26/6/08	CLIENT REVIEW	<input type="checkbox"/>	BOB	STAN	Cloud and Tag
2	Alphabetic			<input type="checkbox"/>			Cloud and Tag
3	Alphabetic			<input type="checkbox"/>			Cloud and Tag
4	Alphabetic			<input type="checkbox"/>			Cloud and Tag
5	Alphabetic			<input type="checkbox"/>			Cloud and Tag

Buttons: Add, Move Up, Move Down, Merge Up, Merge Down, Options...

Revision Properties

Fields | Sorting/Grouping | Formatting | Appearance

Graphics

Build schedule:  Top-down  Bottom-up

Grid lines:  Thin Lines  Grid in headers/footers/spacers

Outline:  Thin Lines

Height: Variable  Blank row before data

Text

Show Title Underline:  Thin Lines

Show Headers Underline:  Thin Lines

Header text: Arial 2.5000  Bold  Italic

Body text: ISOCPEUR 2.5000  Bold  Italic

Buttons: OK, Cancel, Help

What's New – Revit Architecture 2009



## Room Improvements

### Tags

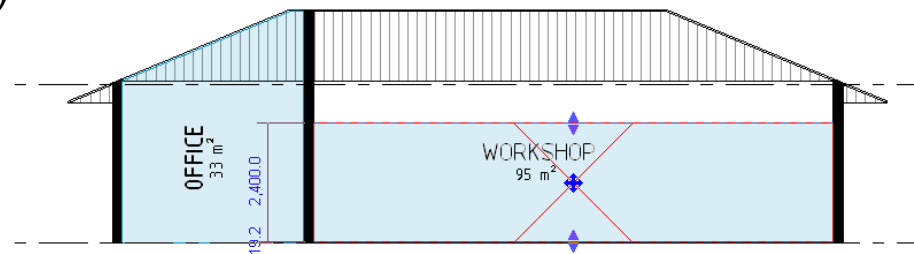
- Tag all not tagged
- Move tag when room is relocated
- Rotate room tags (increments of 90°)

### Rooms

- Calculated Volume displayed
- Shape handles to rooms (in section)
- Selectable in Section
- Deleted rooms remain as 'not placed'
- Colour Fill in Section

### General

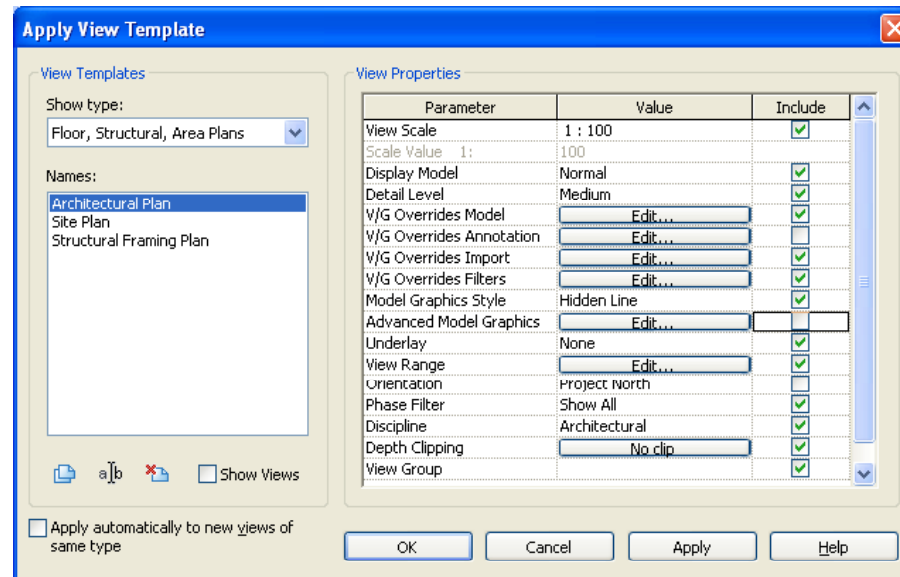
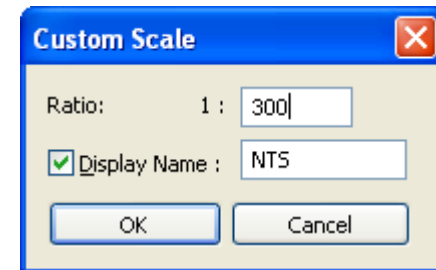
- Spaces - MEP





## View Control

- Linework tool on linked files, polylines
- 'Not to Scale' display
- Apply portions of View Templates
- Phase Mapping thru linked files

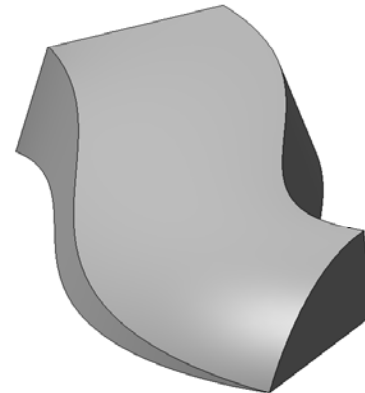


What's New – Revit Architecture 2009



## Modelling

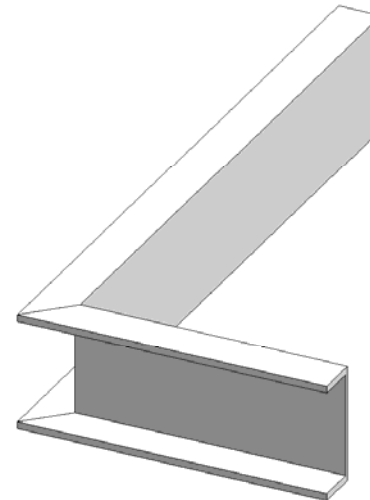
- Mirror Project/ Rotate Project North
- Swept Blend
  - only allows one segment to path
- Massing
  - Floor Area and Volume
- Pads
  - Sloped
  - Room Bounding
- Floors
  - Shape editing to curved floors
  - Fill patterns to warped surfaces





## Miscellaneous

- Selection Count
- Multi-Parameter Labels (Annotation Families)
- Railing Tags
- Additional formatting to schedules (eg currency)
- Apply a centre gap to grids
- Slab edges auto join
- Join/Mitre Structural Beams





## Rendering

- New Mental Ray engine
  - New materials
  - Physically accurate lighting
  - Photometric lights
  - Higher quality, easier to use
- Export straight to Max



## **Miscellaneous**

- DWFx format
- FBX format
- Batch Print
  - Runs in the background
- Worksharing Monitor
  - Editing request popup



*Thank you*  
Questions ?

Clay Hickling

