



Revit MEP 2009

New Features

Brendan Upton
Hyder Consulting





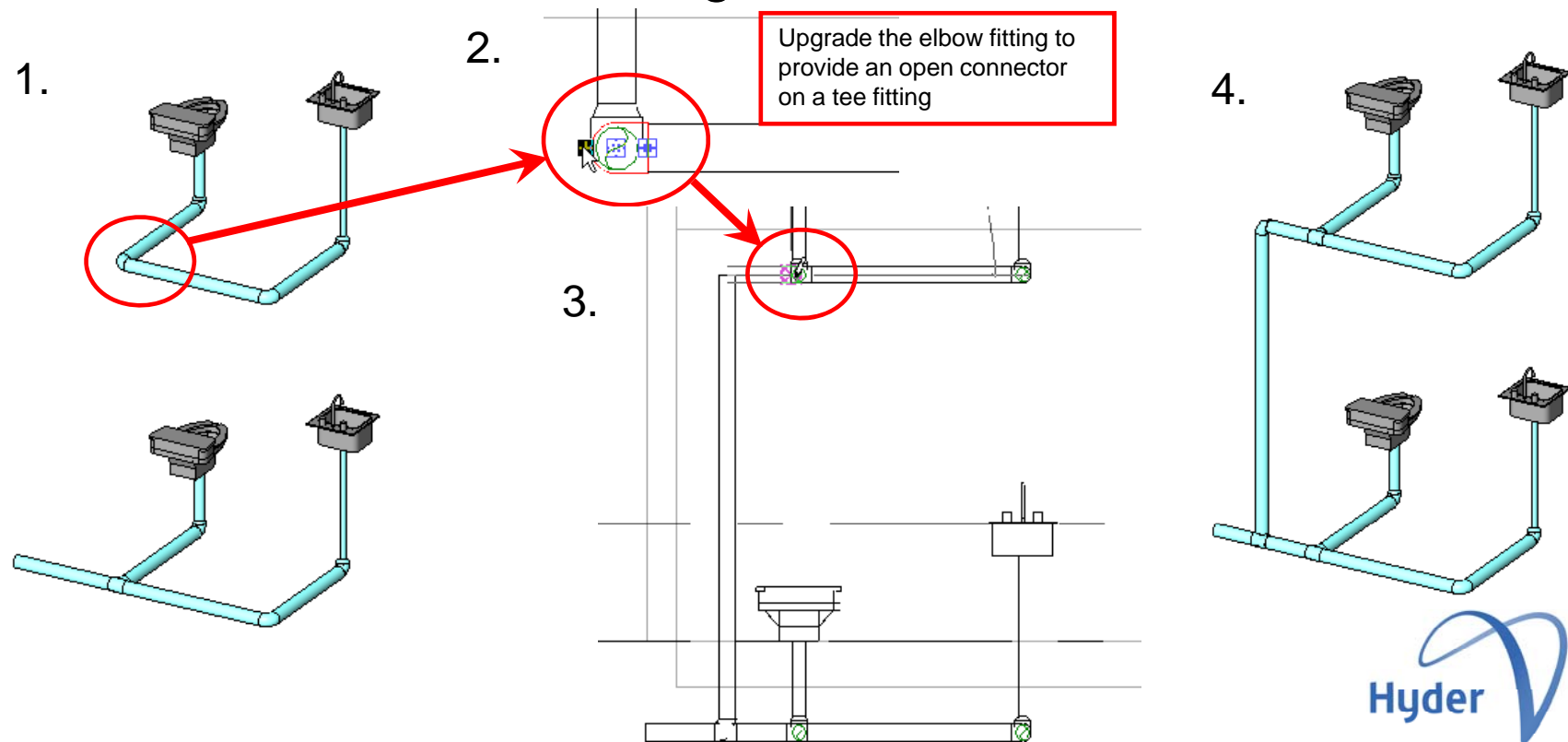
LAYOUT TOOLS

Layout in Elevation & Section Views

(This is a major improvement!!!)

- Able to draw Ductwork & Piping in a section view
- Big timesaver
- Create risers with ease!!!

- But beware, you are working from a different perspective
- Best to select an existing connector to start





LAYOUT TOOLS

Applying Slopes

'Routing Modify' toolbar

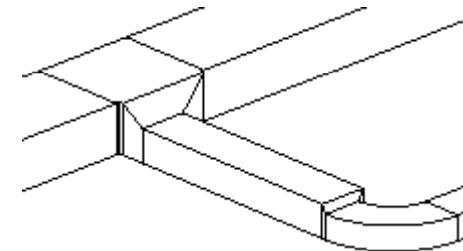
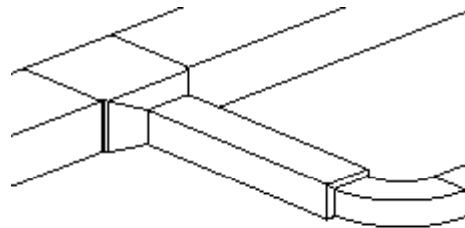


- Apply slope to specific sections or to entire system
- Create entire system before applying any slope
- To access Click Windows menu > Toolbars > Routing Modify to activate the toolbar

LAYOUT TOOLS

Justifying Ductwork & Piping

'Routing Modify' toolbar

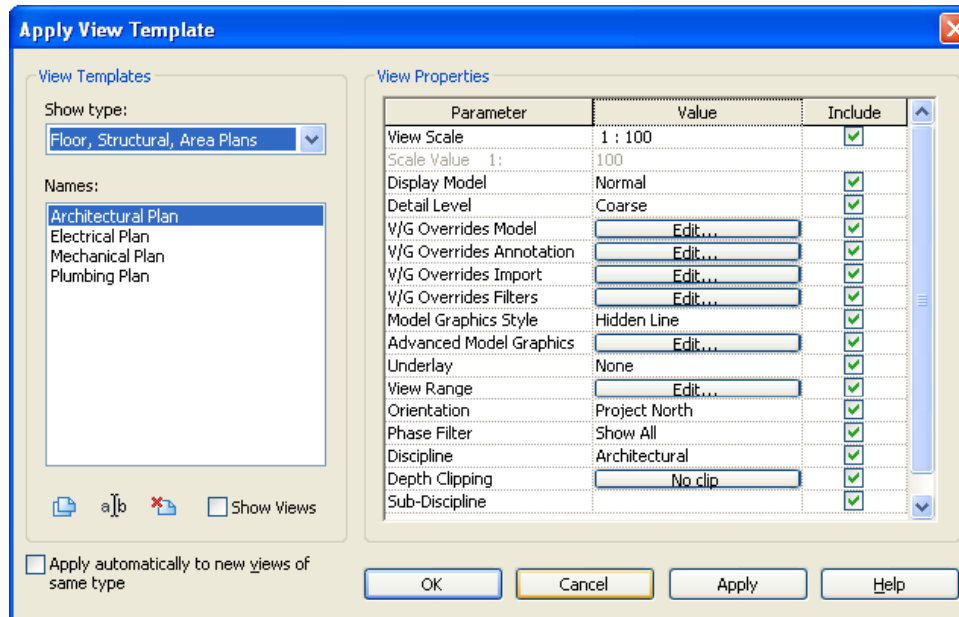


- Ability to align ductwork on one side
- To access Click Windows menu > Toolbars > Routing Modify to activate the toolbar

VISUAL CONTROL

View Templates

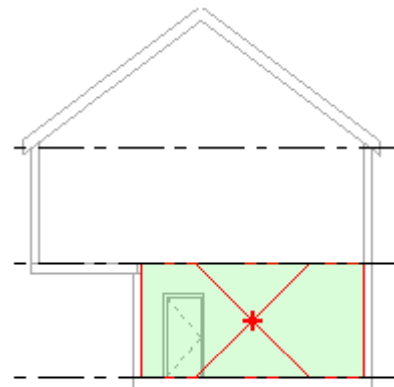
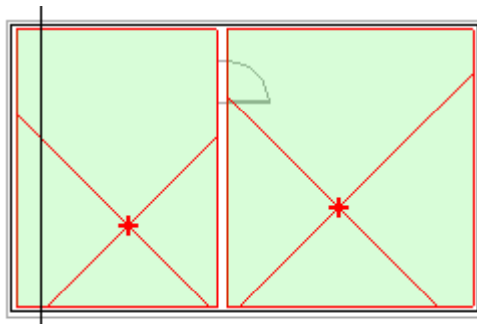
- Greater flexibility in applying view templates
- Expanded interface allows for only portions of a template to be applied



ENERGY ANALYSIS

Spaces & Zones

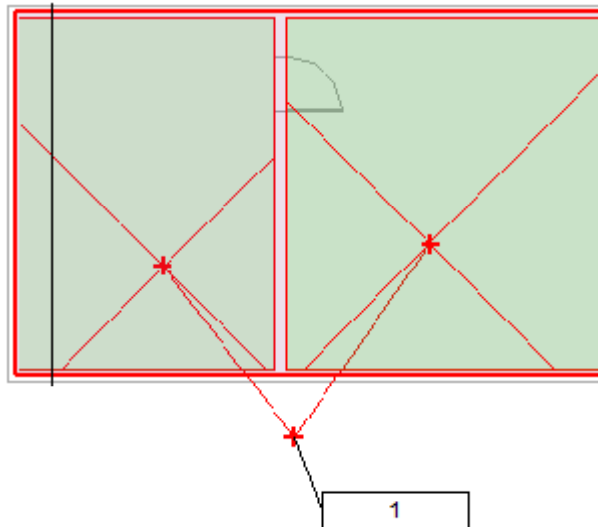
- The new space component maintains a variety of parameters that determine the H&C loads for a project
- Ability to define spaces in ceiling spaces, plenums, shafts etc...



ENERGY ANALYSIS

Spaces & Zones

- Zones are a collection of spaces
- provide an aggregation of the heating and cooling loads for the spaces assigned to the zone





ENERGY ANALYSIS

Heating & Cooling Loads

- Heating and cooling loads now show peak load values for spaces, zones, and levels
- As well as for the entire project
- A greater control over building parameters lets you specify outside air flow
- A more precise analysis of loads

NAVIGATION TOOLS

View Cube

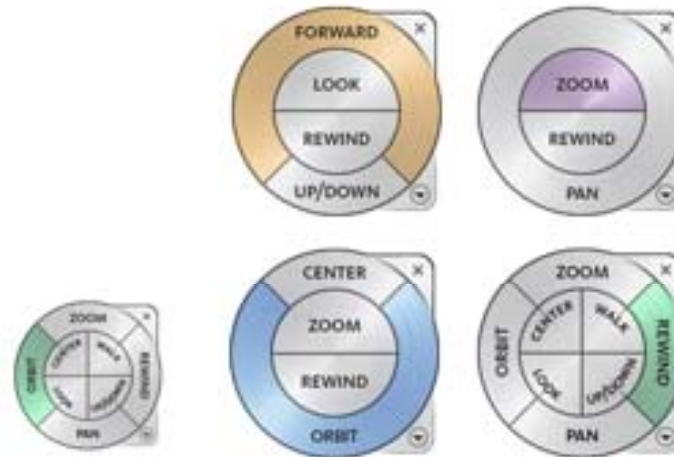


- Graphically allows control over orthographic and perspective views of the 3D model



NAVIGATION TOOLS

Steering Wheels

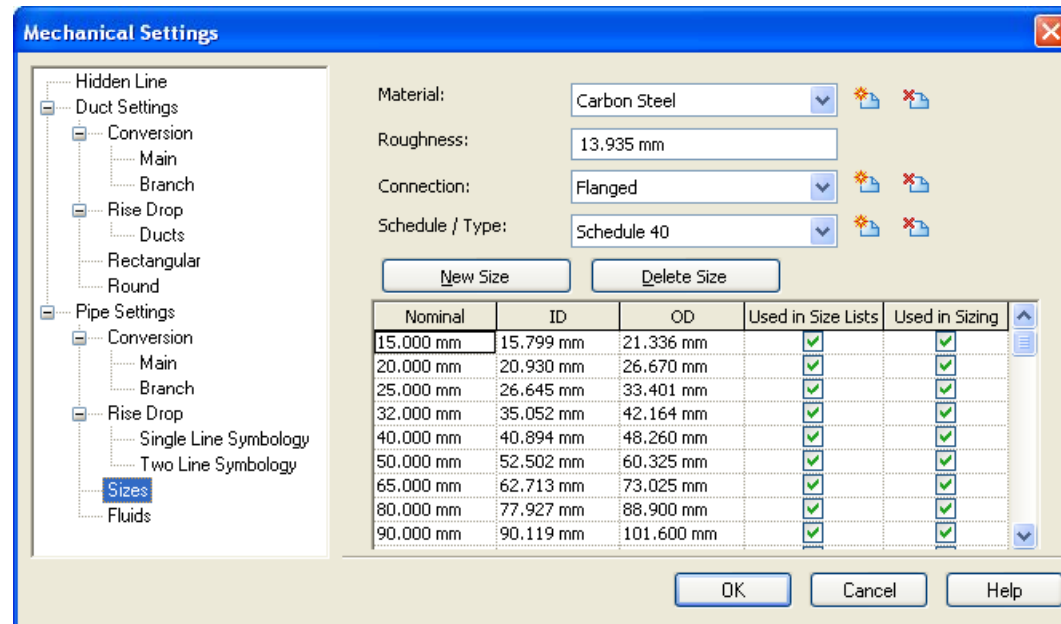


- Give controls for zooming, panning, and orbiting a 3D or a 2D model
- Direct manipulation of camera views is possible using the Steering Wheels

OTHER IMPROVEMENTS

Settings

- Duct, Pipe & Wire sizes integrated into Mechanical Settings
- No need to edit the XML file anymore
- These sizes can also be transferred to other projects





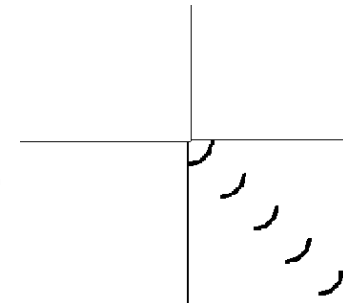
OTHER IMPROVEMENTS

Formatting Schedules Schedule/Quantities...

- Ability to specify the lineweight, font style & size for text within schedules
- The schedule must be placed on a sheet
- Numerical values inside schedules now have additional formatting options
 - e.g. \$, commas, spaces etc

Detail Lines Detail Lines

- Ability to add MEP-specific detail lines e.g. 'Turning Vanes'
- Detail lines now appear as full tone



Consulting



OTHER IMPROVEMENTS

Dimension Text

- Dimension text overrides allow for editing the value of dimensions
- This text can be added above or below the dimension line
- Or as a prefix/Suffix

Room Volumes

- Room volume calculations shown graphically and are easily modified

Linework Control



- Linework tool now works on edges in linked files



Thank you
Questions ?

Brendan Upton

