

REVIT
TECHNOLOGY
CONFERENCE



Revit Implementation

Simon Whitbread

Revit Manager, Associate, JASMAX Architects





Revit Implementation

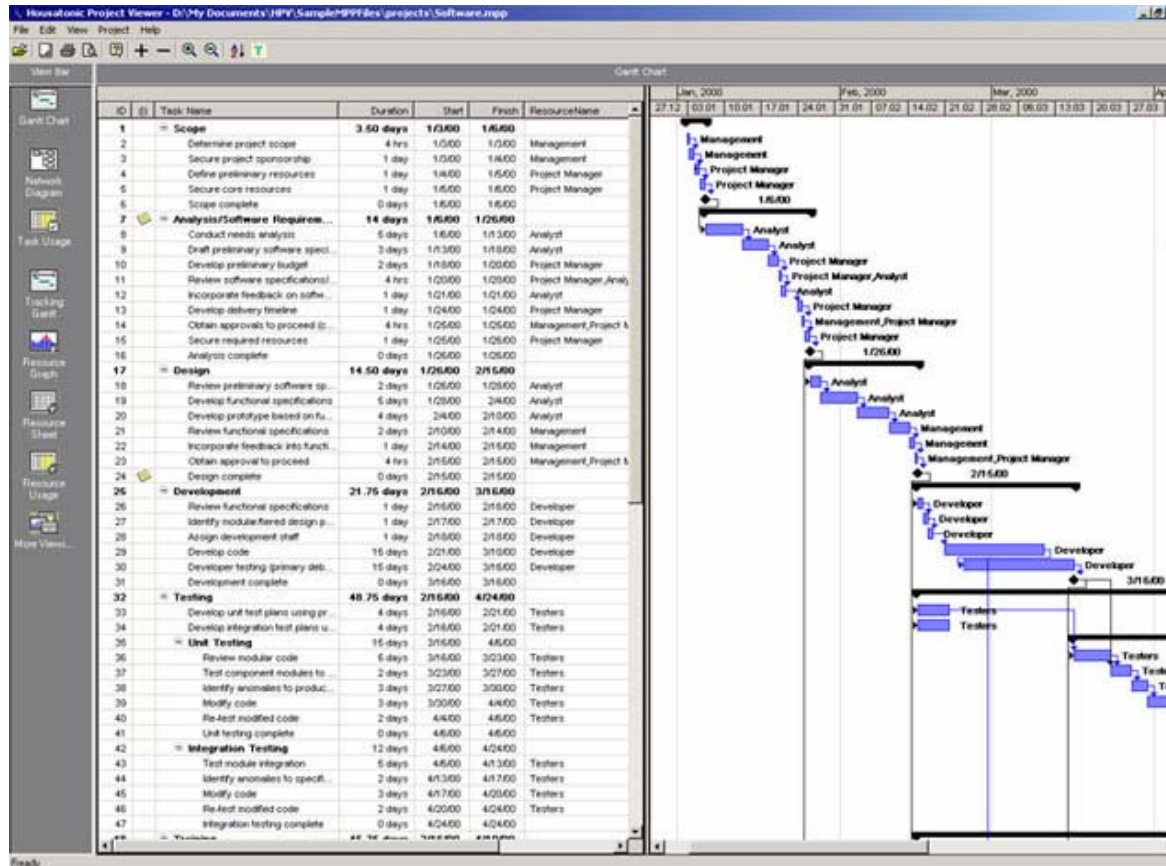
You made your choice. So now what?

- Strategic Planning
- Library – legacy and new
- Standards
- Pilot Projects
- Training
- Documentation and Communication



Strategic Planning

- Plan ahead





Strategic Planning

- Plan ahead

Plan, in detail the next 12 to 18 months

Include the following:

- Conversion of existing library
- Creation of project templates
- Management of training
- Upgrade of hardware
- Planned rollout of software.



Library

Which came first?



- Existing CAD Library
 - Use what you can without compromising the powerful parameters in Revit
- New Library – **O_{ut} O_f T_{he} B_{ox}**
 - As with all new software and components, ensure the library
- New Library – Custom Built
 - Keep it simple to start with. Just because you can, doesn't mean you should



Standards



- Company Standards

- Is this the time to review them?



- Or will Revit display what you want OOTB?



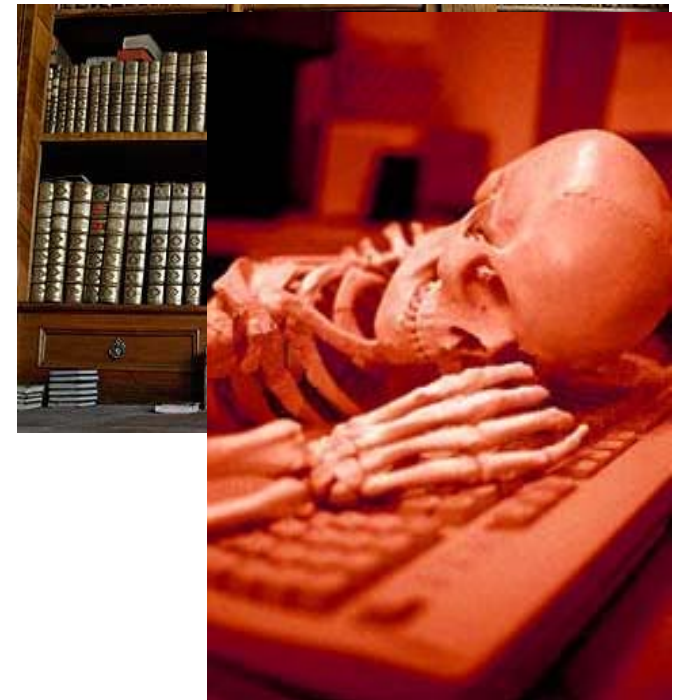
- Is control necessary over content downloads?

For quality control, should you consider restricting the availability of downloaded families.



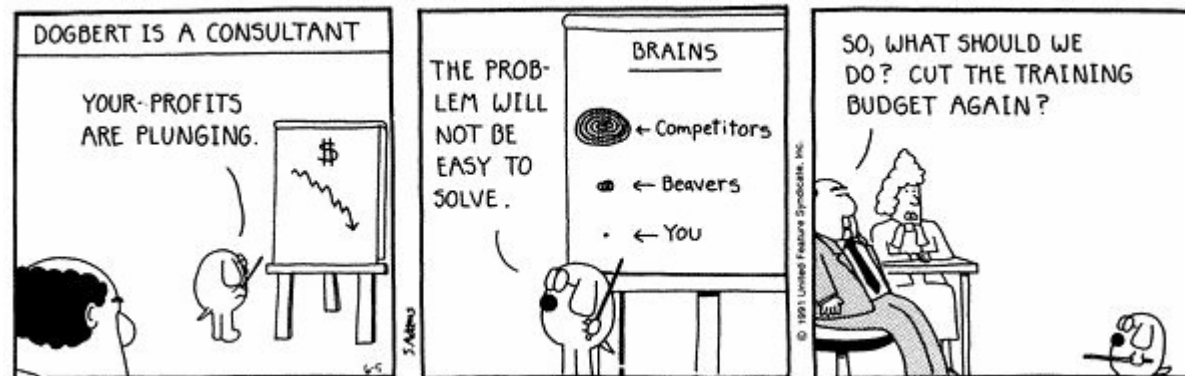
Pilot Projects

- Chose a receptive team that will work on your pilot project
- Ensure an adequate library for project use
- Time – this project may take longer than normal. Allow extra time for your deliverables





Training



- Training is an investment
 - Make sure your staff have adequate training for the job they are attempting. Remember this is new for them and there may be some reluctance.
- Specialist support
 - Consider external help for 'I need an answer now' questions



Documentation

- Documentation
Availability of documentation for new users

		NEWS PROJECT SYSTEMS DOCUMENTATION BUILDING TECHNOLOGY BIM IT S & MARKETING OFFICE ADMIN STAFF RECOMMENDED LINKS INDUCTION PRO SEARCH
<ul style="list-style-type: none"> ▼ JASMAX Documentation Settings & Standards Procedures ▶ AUTODESK Documentation ▶ REVIT Forum ▶ REVIT Tips & Tricks ▶ REVIT Advisors 	<h2>JASMAX Revit Documentation</h2> <h3>Settings and Standards</h3> <hr/> <h3>Revit Start-up Kit</h3> <ul style="list-style-type: none"> <input type="radio"/> Revit Start up Kit New to Revit? New to Jasmx? Orientate yourself with these MUST HAVE pages <hr/> <h3>Default Settings</h3> <ul style="list-style-type: none"> <input type="radio"/> Local Files <input type="radio"/> Keyboard Shortcuts <input type="radio"/> Revit Interface Screen layout <hr/> <h3>JASMAX Standards</h3> <ul style="list-style-type: none"> <input type="radio"/> Line Styles JASMAX Line Styles <input type="radio"/> Line Weights <input type="radio"/> Worksets Standard CBI Coded workset names 	



Communication

- Communication

On Revit projects, this is an absolute must.

Team members need to communicate effectively with each other.

Workflow changes from previous drafting methods





Questions?